



—Internet setting guide (English version)—  
Ver.1.0eng

【 Table of contents 】

Wired / Wireless LAN settings	Windows10	1
Wired / Wireless LAN settings	Mac OS-X	1
Wired / Wireless LAN settings	Windows8	2
Wired / Wireless LAN settings	Windows7	2
Connect to a Wi-Fi network (SSID)	Windows10	3
Connect to a Wi-Fi network (SSID)	Mac OS-X	3
Connect to a Wi-Fi network (SSID)	Windows8	4
Connect to a Wi-Fi network (SSID)	Windows7	4
Connect to a Wi-Fi network (SSID)	iOS	5
Connect to a Wi-Fi network (SSID)	Android	5
Frequently Asked Questions		6

## Wired / wireless LAN settings - Computer -

### 【 Wired / wireless LAN settings –Windows10–】

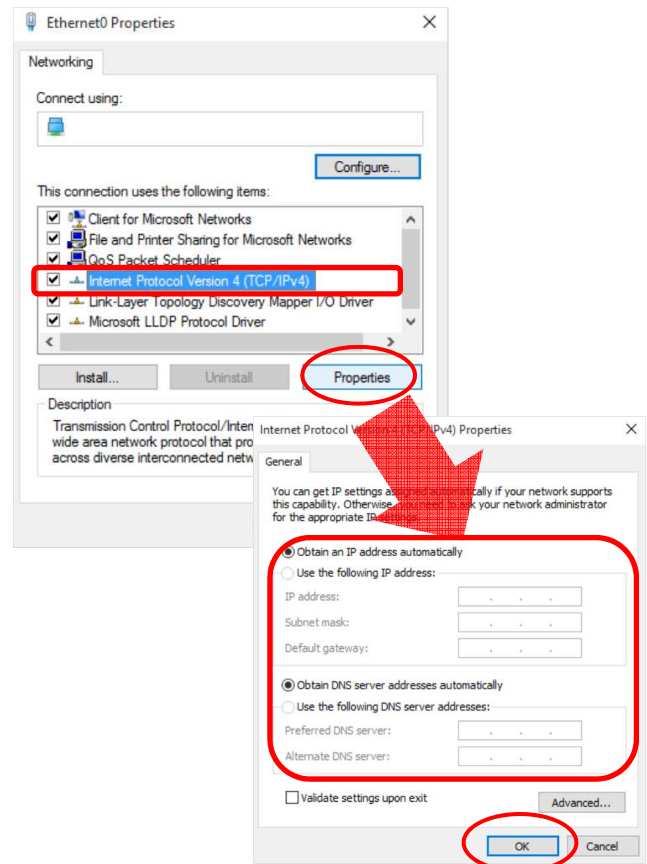
1. Right click the start button and select "Network connection (W)".
2. Right-click the adapter name to be used and click "Properties (R)".

※If an "×" mark is displayed in "Local Area Connection" when connecting to a wired network, check that the LAN cable connected to the access point is properly connected.

3. Select "Internet Protocol Version 4 (TCP / IPv4)" and click "Properties (R)".

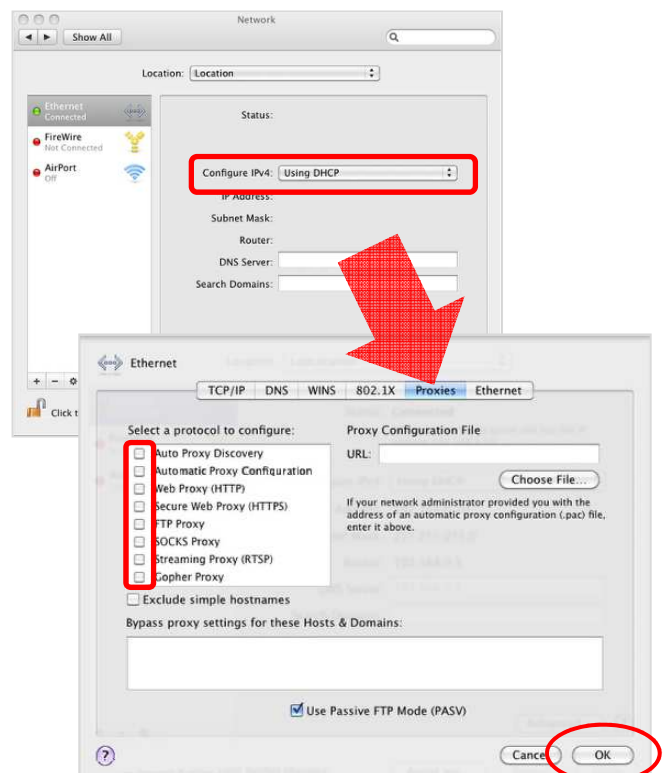
※If "Internet Protocol Version 6 (TCP / IPv6)" is displayed in the list, uncheck the box on the left.

4. Confirm that "Check the IP address automatically (O)" and "Obtain DNS server address automatically (B)" on the "General tab " are checked and click "OK" ⇒ "Click Close" to close the screen.



### 【 Wired / wireless LAN settings –Mac OS-X–】

1. Click " Apple menu " ⇒ " System preferences...".
2. Click "Network" in "System Environment Setting".
3. Select the connection method to be use from the left side of the "Network" screen, select "Use DHCP server" for "IPv4 configuration:", and click the "Apply" button.
4. When the screen being set up is updated, if anything other than "Connect" is displayed in "Situation:", please check the connection environment of wiring connection. Click "Details".
5. Click the "Proxy" tab, remove all checks from "Select protocol to configure", click "OK" in the lower right, and close the screen with the close button on the upper left.



## 【 Wired / wireless LAN settings –Windows8–】

1. Hold down the "Windows" key, press the "X" key, and click "Control Panel" from the list.
2. As "Control Panel" is displayed, click "Network status and task display".

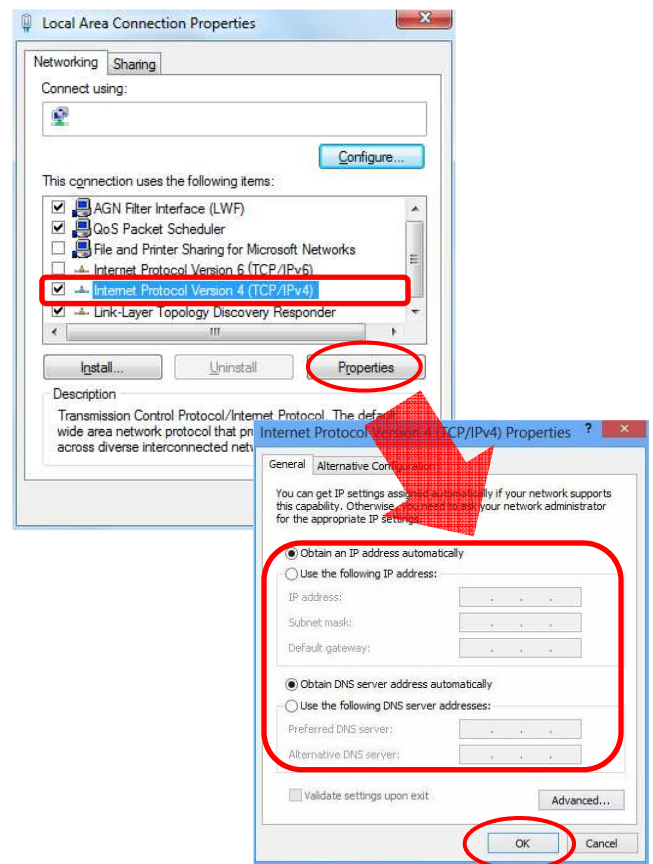
3. "Network and Sharing Center" is displayed. Click "Change adapter settings".
4. The "Network connection" screen will be displayed. Right-click the adapter name to be used and click "Properties (R)".

※If "✖" is marked on "Ethernet" when connecting to wired LAN, check if the LAN cable connected to the access point is properly connected.

5. Select Internet Protocol Version 4 (TCP / IPv4) "and click" Properties (R) ".

※If "Internet Protocol Version 6 (TCP / IPv6)" is displayed in the list, uncheck the box on the left.

6. Check the "Obtain an IP address automatically (O)" and "Obtain DNS server address automatically (B)" on the "General tab " and click "OK".



## 【 Wired / wireless LAN settings –Windows7–】

1. Click "Control Panel" from "Start button".
2. As "Control Panel" is displayed, click "Network status and task display".

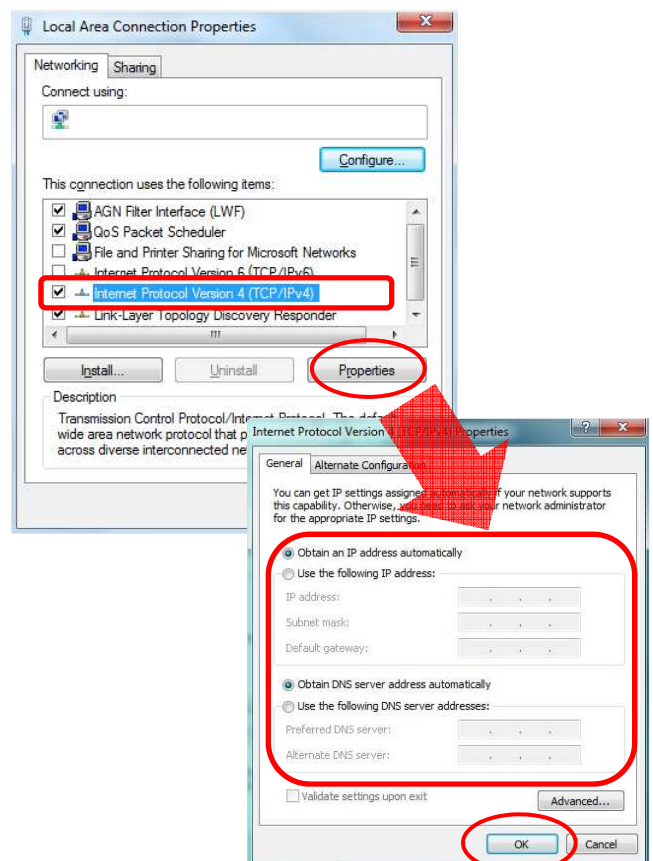
3. Click "Change adapter settings". Right-click on the adapter name to be used and click "Properties (R)".

※If "✖" is marked on "Ethernet" when connecting to wired LAN, check if the LAN cable connected to the access point is properly connected.

4. Select "Internet Protocol Version 4 (TCP / IPv4) by clicking and click" Properties (R) ".

※If "Internet Protocol Version 6 (TCP / IPv6)" is displayed in the list, uncheck the box on the left.

5. On the "General" tab, make sure the "Automatically acquire IP address (O)" and "Obtain DNS server address automatically (B)" are checked and click "OK" .

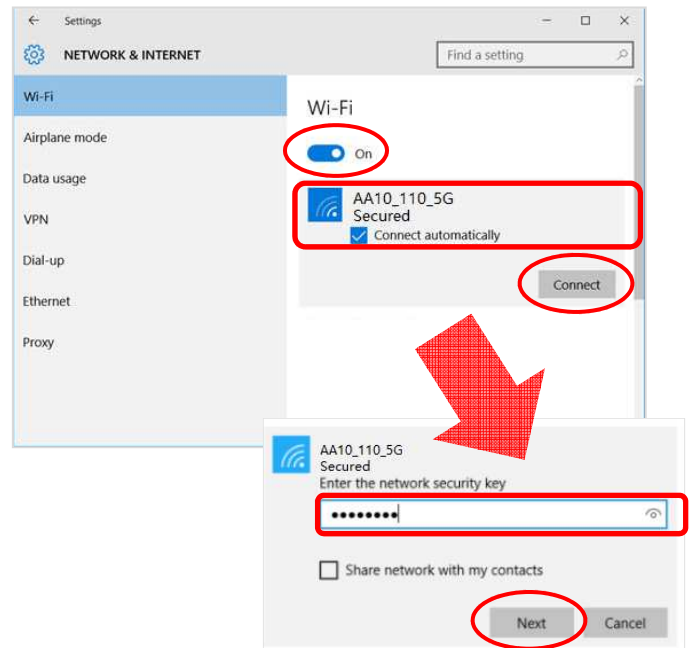


## Connection to Wi-Fi network (SSID) - Computer -

### 【 Connection to Wi-Fi network (SSID) –Windows10–】

1. From the start button, go to "Settings" ⇒ "Network and Internet" ⇒ "Wi-Fi" in that order.
2. Turn on "Wireless Network Connection". Searching for Wi-Fi networks available on your device starts.
3. Select the SSID assigned for each room written in the form and click "Connect button".
4. You will be prompted "Enter network security key", enter the password stated in the form and click "Next". As security confirmation items are displayed, please select optional and proceed to the next.

If you successfully connect the SSID in the above procedure, "Secured (Connect automatically)" appears under the SSID.

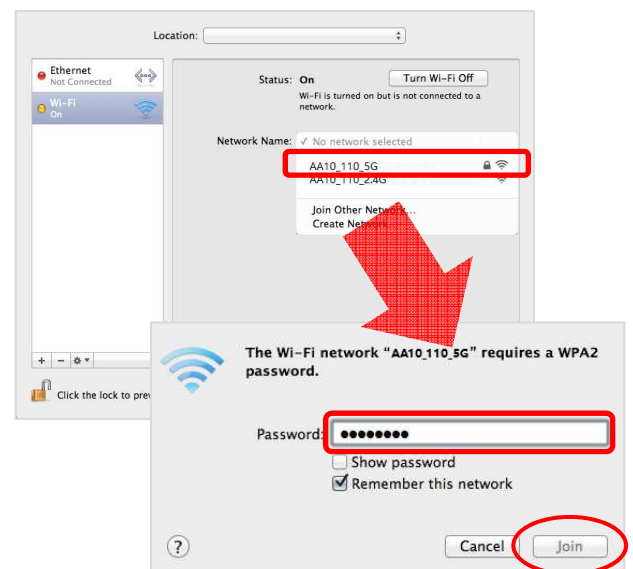


### 【 Connection to Wi-Fi network (SSID) –Mac OS-X–】

1. Click "Apple menu" ⇒ "System preferences ..." in that order.
2. Click "Network" in "System Preferences". Select "Wi-Fi" in the left menu of the "Network" screen and select "Enable Wi-Fi."
3. Click "Network name:", select the SSID described in the written form from the list of displayed network names, enter the password and click "Connect".

※If "Do you want to apply changes?" Screen is displayed, click on "Apply".

If you successfully connect to the SSID in the above procedure, "Connected" will be displayed to the right of "Status:".



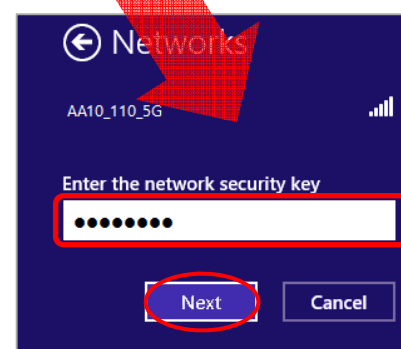
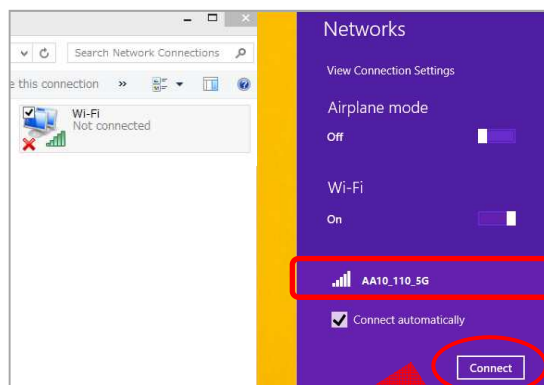
### 【 Connection to Wi-Fi network (SSID) –Windows8–】

1. Hold down the "Windows" key, press the "X" key, and click "Control Panel" from the list.
2. Since "Control Panel" is displayed, click "Network status and task display".
3. "Network and Sharing Center" is displayed. Click "Change adapter settings".
4. Right-click on the WIFI icon and select "Connect / Disconnect" to start searching for a Wi-Fi network that can be connected on the user's terminal.
5. From the displayed list, select the SSID described in the document and click "Connect (C)".

You will be prompted "Enter network security key", so enter the password stated in the form and click "Next".

※ As security confirmation items are displayed, select them arbitrarily and proceed to the next.

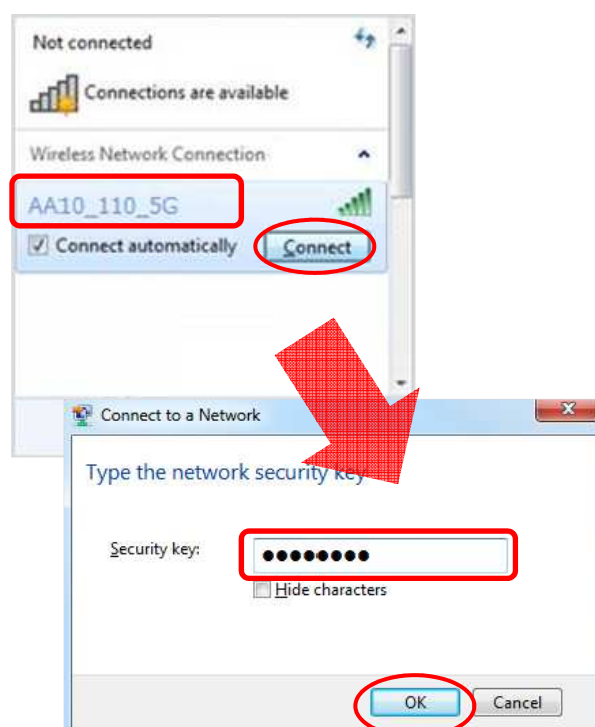
If you successfully connect the SSID in the above procedure, "Connection Secured" appears under the SSID.



### 【 Connection to Wi-Fi network (SSID)–Windows7–】


1. Go from "Start button" to "Control panel" ⇒ "Network and Internet".
2. "Network and Sharing Center" is displayed. Click "Change adapter settings".
3. Right-click on the WIFI icon and select "Connect / Disconnect" to start searching for a Wi-Fi network that can be connected on the user's terminal.
4. A list of wireless network connections appears on your desktop.  
From the displayed list, select the SSID described in the document and click "Connect (C)".
5. For "Security Key (S)", enter the password described in the document and click "OK".


If you successfully connect to the SSID in the above procedure, "Connect" will be displayed at the right of the connected SSID.

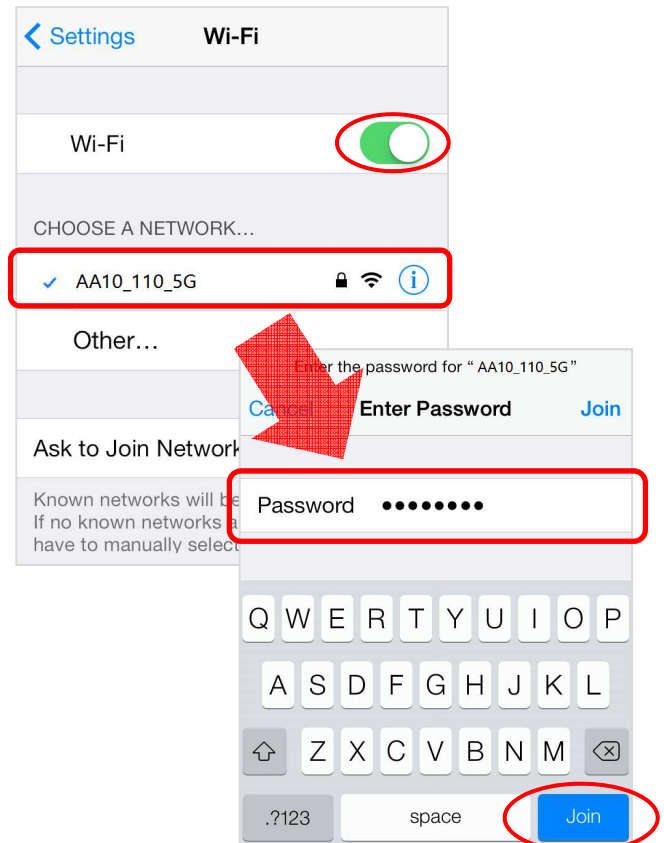




### 【 Connection to Wi-Fi network (SSID) –iOS–】

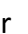
1. From the home screen, tap "Settings" ⇒ "Wi-Fi" in that order.
2. Turn "Wi-Fi" on. The research for a Wi-Fi network that can be connected on the user's terminal begins.
3. Please tap the SSID name stated in the room document, then enter the password.  
If you successfully connect to the SSID in the above procedure, ✓ appears next to the SSID and  appears in the upper left corner of the screen.

※In the initial connection state, it is "DHCP" setting. If you accidentally set a fixed IP address, tap on the right end of the connected SSID  and return the setting to "DHCP".

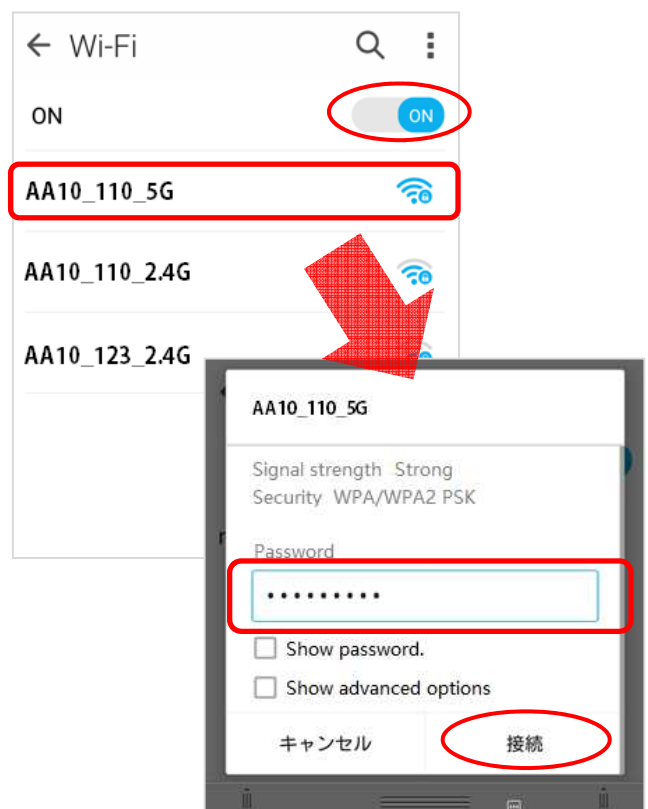


### 【 Connection to Wi-Fi network (SSID) –Android–】

1. From the home screen, tap "Settings" ⇒ "Wireless and network" in that order.
2. Turn "Wi-Fi" on and tap "Wi-Fi" to start searching for a Wi-Fi network that can be connected on the user's terminal.
3. Tap the SSID name stated in the room form and enter the password, then tap "Connect".

If you successfully connect to the SSID in the above procedure, "Connected" is displayed and  will appear next to the SSID and in the upper left corner of the screen.

※ The initial connection state is in "DHCP" setting. If you mistakenly set a fixed IP address, tap the target SSID for a longer time, delete the setting with the "Delete" button and restart the setting again from the beginning.



## Frequently Asked Questions

**Q:** Do I need to join a provider?

**A :** This service is a service including lines and providers. Provider connection information etc. are not provided.

**Q:** What are the supported OS?

**A :** For personal computers, we recommend Microsoft Windows (Vista or later), Apple Computer OS - X or later, Android (4.0.3 or later) iOS (7.0 or later). We will not support other OSs. We recommend using the latest version of browsers.

**Q:** Is there a recommended LAN cable?

**A :** We recommend straight cables of category 5e or higher quality.

**Q:** Can you issue e-mail address?

**A :** We do not provide e-mail address with this service. (Please use the email address issued by the university.)

**Q:** I would like to use a tablet (or a smartphone) instead of a personal computer at home, is it available?

**A :** It is available with the wireless communication function of FGN-R3. SSIDs and passwords are different depending on the rooms.

**Q:** Can I use a network printer?

**A :** Due to the specifications of this service, communications between wireless terminals are not possible. Please use either wired LAN connection for either printer or any other user terminal.

**Q:** Can I communicate between wireless terminals?

**A :** Due to the specifications of this service, communications between wireless terminals via the access point (FGN - R3) are not possible. As with printers, please either use wired LAN connection for one of the terminals you use.

**Q:** Can I use switching HUB, wireless router prepared by myself?

**A :** Please refrain from using switching HUB, wireless router etc. prepared by yourself. In addition, you will receive no support from our company.

**Q:** Can I use network games?

**A :** Although you can use network games, you can not use those that require a global IP address or those who require individual settings (port open etc.). In addition, you may not be able depending on the specifications of the game.

**Q:** What is a private (local) IP address?

**A :** The private (local) IP address in this service is an IP address that can be used only in your building. The network equipment managed by our company automatically assigns the IP address to the user's terminal. Applications or network equipment's that require a direct global IP address can not be used.

**Q:** Do you provide a global IP address?

**A :** This service will be provided by local IP address. IPv6 address is not available. Also, please understand that it is not possible to use applications that require global IP address.

**Q:** Can I use P2P (Peer to Peer) software?

**A :** The use of P2P communication software may give a load to the Internet line. It will be prohibited because it will affect other users' Internet connection as well. Please note that if P2P communication is discovered, there will be communication restrictions and therefore usage will be suspended.